

TYPE A1

42.0 m² / 452 ft²
(inclusive of 5m² Balcony & 3m² AC Ledge)

- Blk 19, #02-04* to #04-04*
#02-05* to #04-05*
#02-06 to #04-06
- Blk 21, #02-11 to #04-11
#02-12 to #04-12

TYPE A1-G

56.0 m² / 603 ft²
(inclusive of 5m² PES, 3m² AC Ledge & 14m² Void over Living, Dining & Kitchen)

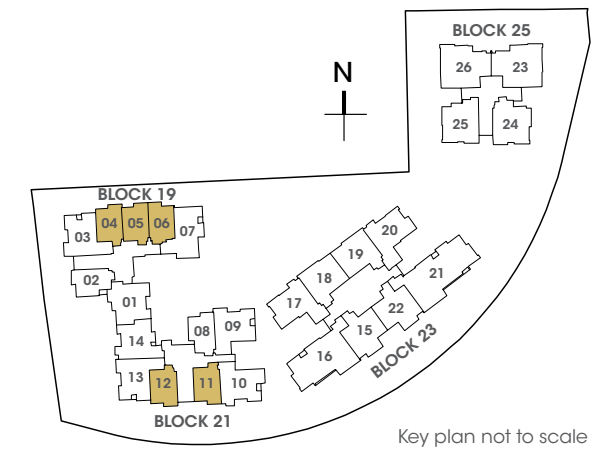
- Blk 19, #01-04*, #01-05* & #01-06
- Blk 21, #01-11 to #01-12

TYPE A1-PH

56.0 m² / 603 ft²
(inclusive of 5m² Balcony, 3m² AC Ledge & 14m² Void over Living, Dining & Kitchen)

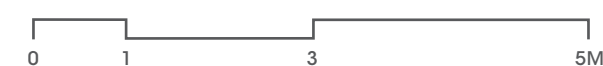
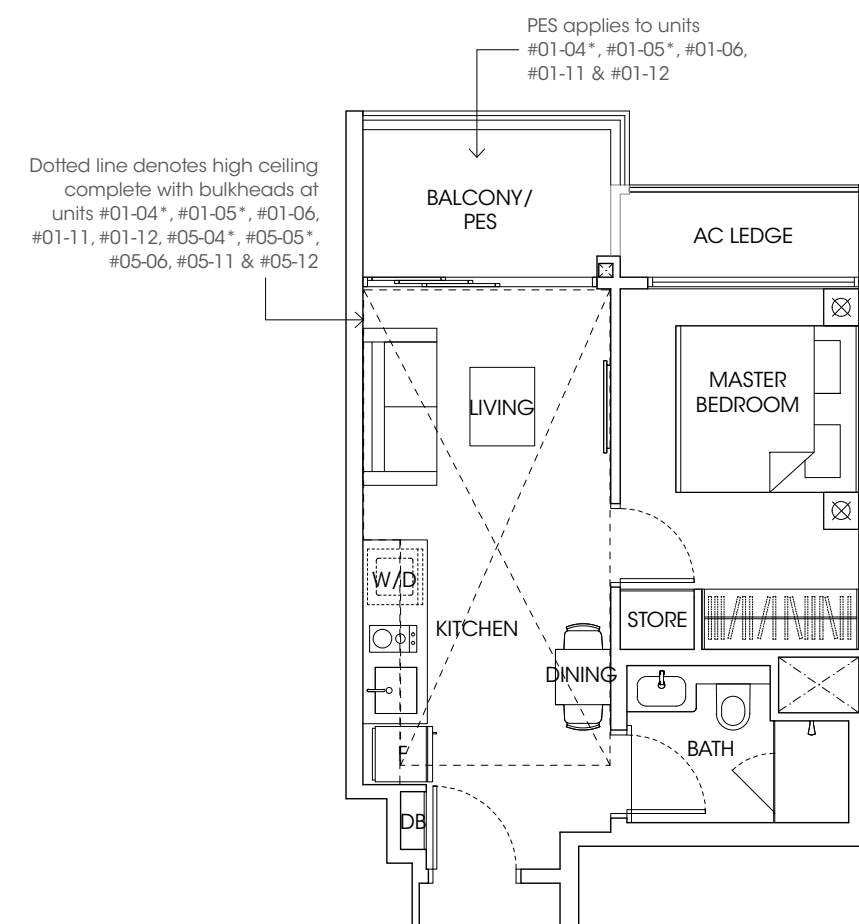
- Blk 19, #05-04*, #05-05* & #05-06
- Blk 21, #05-11 to #05-12

**Mirror Image*



A HOUSE IS MADE WITH WALLS AND BEAMS;
A HOME IS BUILT WITH
LOVE AND DREAMS.

Ralph Waldo Emerson



LEGEND:

- Washer/Dryer
- Fridge
- Distribution Board

All plans are subject to changes by the relevant authorities. Measurements are approximate only and subject to final survey. Information accurate at the point of printing.
BP no.: A712-04181-2018-BP01

TYPE A1A

42.0 m² / 452 ft²
(inclusive of 5m² Balcony & 3m² AC Ledge)

Blk 21, #02-08 to #04-08

TYPE A1A-G

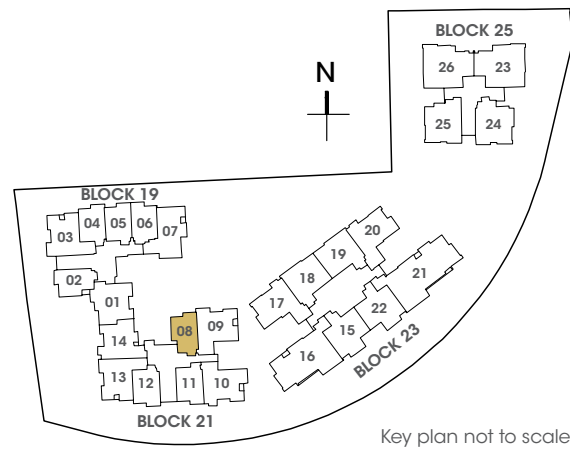
56.0 m² / 603 ft²
(inclusive of 5m² PES, 3m² AC Ledge & 14m² Void over Living, Dining & Kitchen)

Blk 21, #01-08

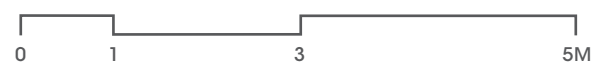
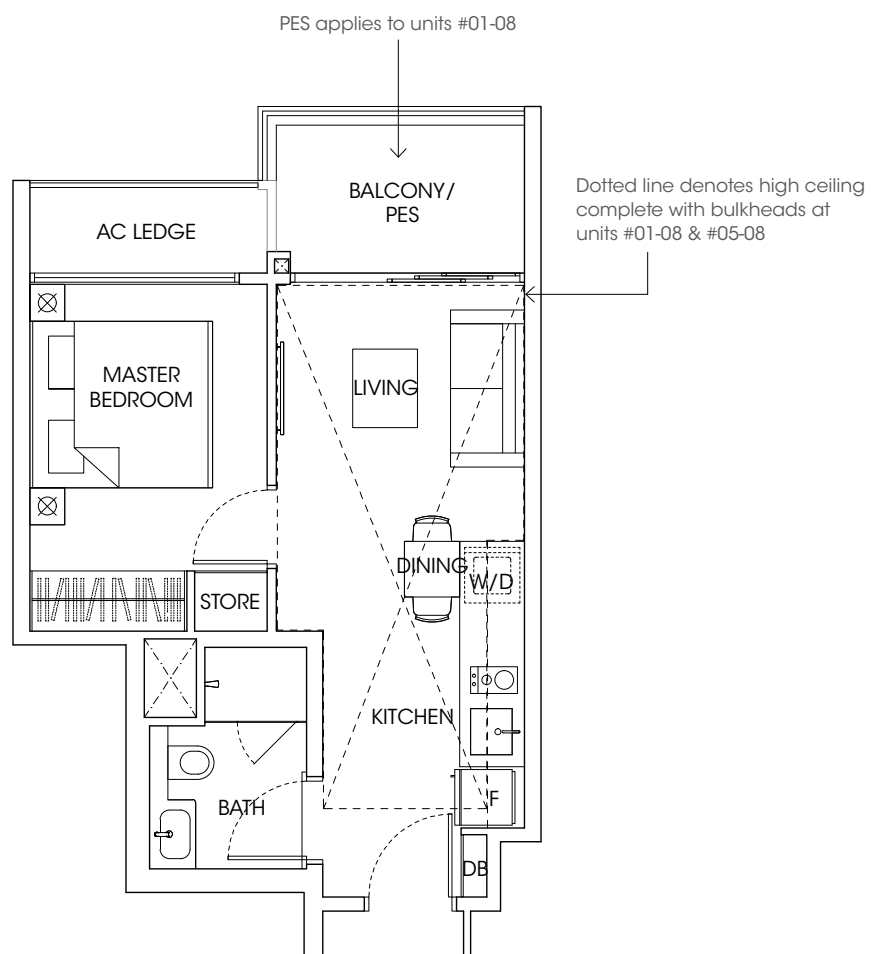
TYPE A1A-PH

56.0 m² / 603 ft²
(inclusive of 5m² Balcony, 3m² AC Ledge & 14m² Void over Living, Dining & Kitchen)

Blk 21, #05-08



Key plan not to scale



LEGEND:

- Washer/Dryer
- Fridge
- Distribution Board

All plans are subject to changes by the relevant authorities. Measurements are approximate only and subject to final survey. Information accurate at the point of printing. BP no.: A712-04181-2018-BP01

TYPE A1B

42.0 m² / 452 ft²
(inclusive of 5m² Balcony & 3m² AC Ledge)

Blk 19, #02-02 to #04-02

TYPE A1B-G

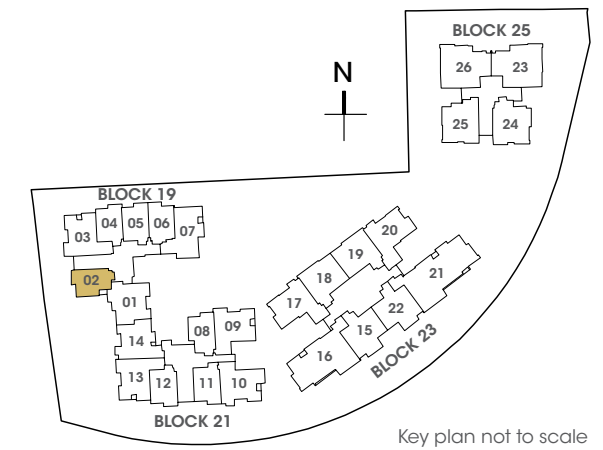
56.0 m² / 603 ft²
(inclusive of 5m² PES, 3m² AC Ledge & 14m² Void over Living, Dining & Kitchen)

Blk 19, #01-02

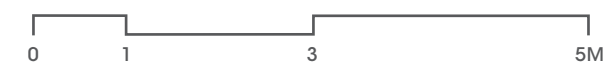
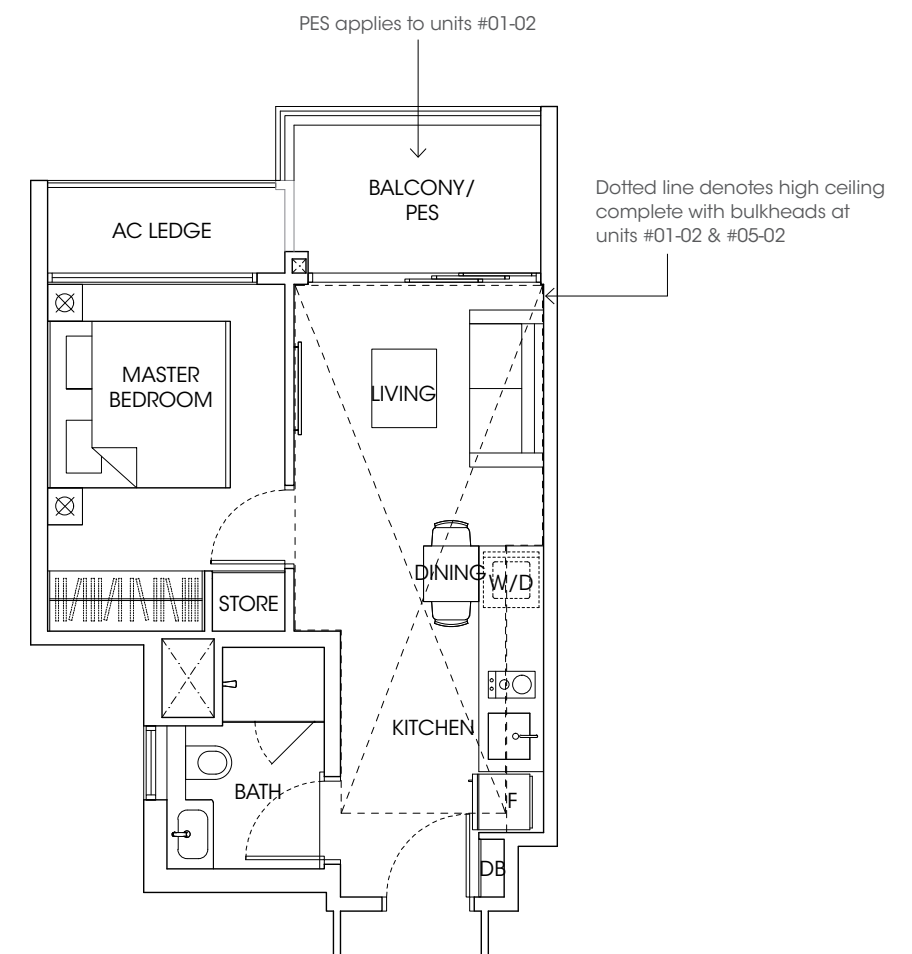
TYPE A1B-PH

56.0 m² / 603 ft²
(inclusive of 5m² Balcony, 3m² AC Ledge & 14m² Void over Living, Dining & Kitchen)

Blk 19, #05-02



Key plan not to scale



LEGEND:

- Washer/Dryer
- Fridge
- Distribution Board

All plans are subject to changes by the relevant authorities. Measurements are approximate only and subject to final survey. Information accurate at the point of printing. BP no.: A712-04181-2018-BP01

TYPE B1A

64.0 m² / 689 ft²
(inclusive of 7m² Balcony & 5m² AC Ledge)

Blk 19, #02-03* to #04-03*
Blk 21, #02-13 to #04-13

TYPE B1A-G

82.0 m² / 883 ft²
(inclusive of 7m² PES, 5m² AC Ledge & 18m² Void over Living, Dining & Kitchen)

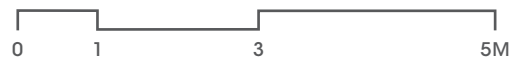
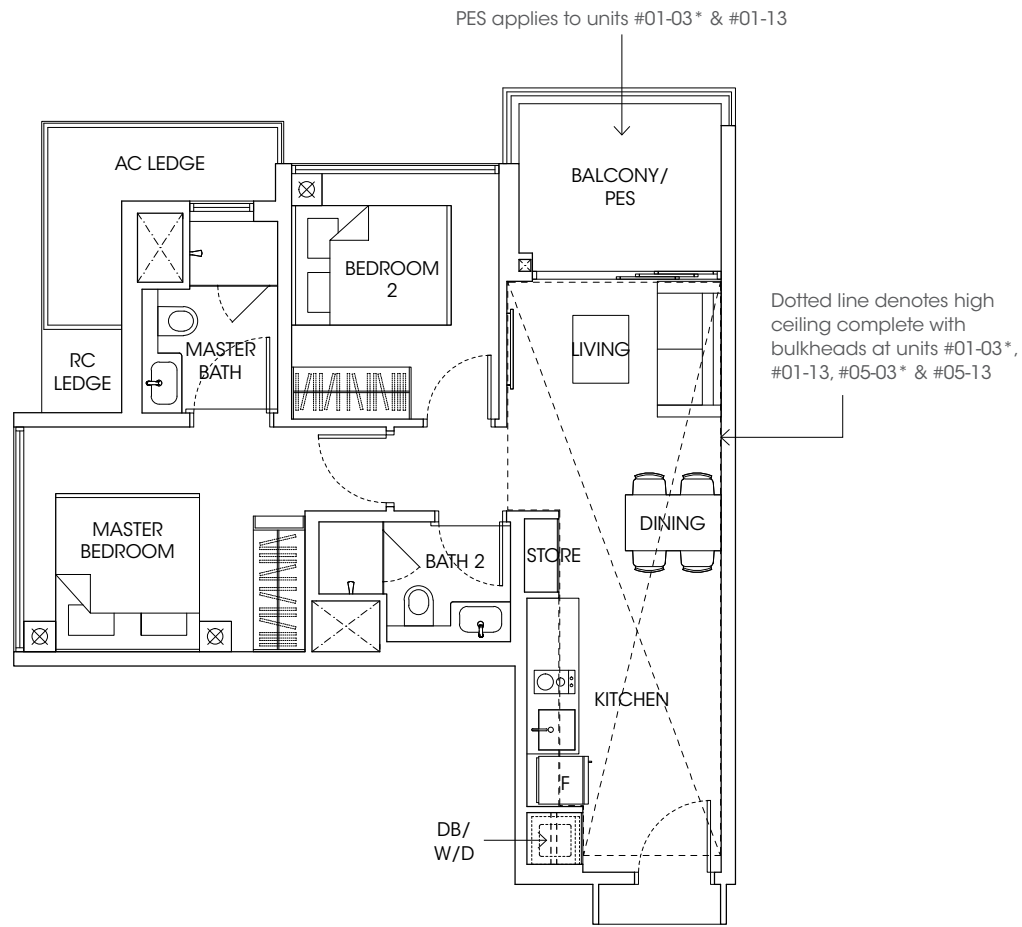
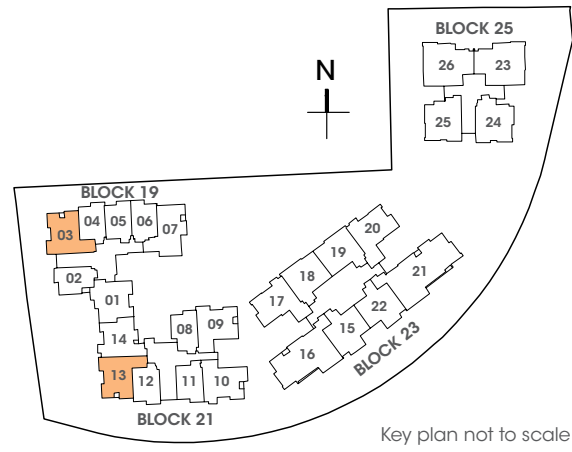
Blk 19, #01-03*
Blk 21, #01-13

TYPE B1A-PH

82.0 m² / 883 ft²
(inclusive of 7m² Balcony, 5m² AC Ledge & 18m² Void over Living, Dining & Kitchen)

Blk 19, #05-03*
Blk 21, #05-13

*Mirror Image



LEGEND:



TYPE B1B

64.0 m² / 689 ft²
(inclusive of 7m² Balcony & 5m² AC Ledge)

Blk 21, #02-10 to #04-10

TYPE B1B-G

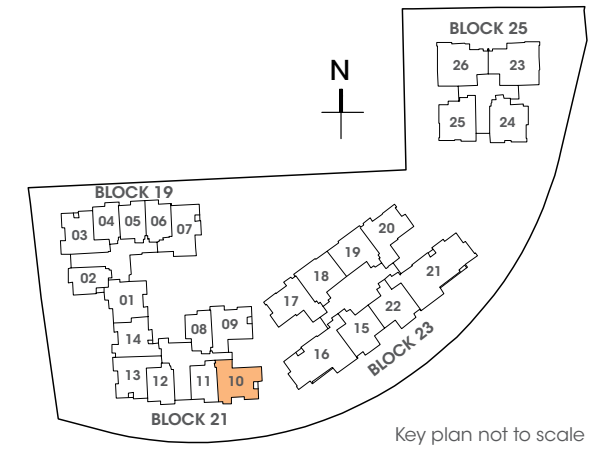
80.0 m² / 861 ft²
(inclusive of 7m² PES, 5m² AC Ledge & 16m² Void over Living, Dining & Kitchen)

Blk 21, #01-10

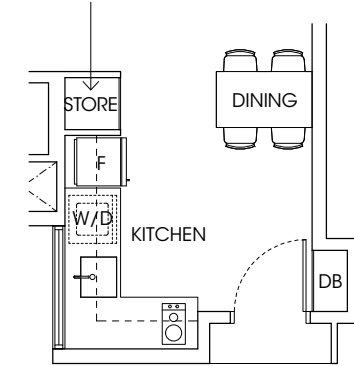
TYPE B1B-PH

80.0 m² / 861 ft²
(inclusive of 7m² Balcony, 5m² AC Ledge & 16m² Void over Living, Dining & Kitchen)

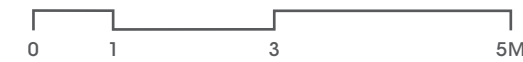
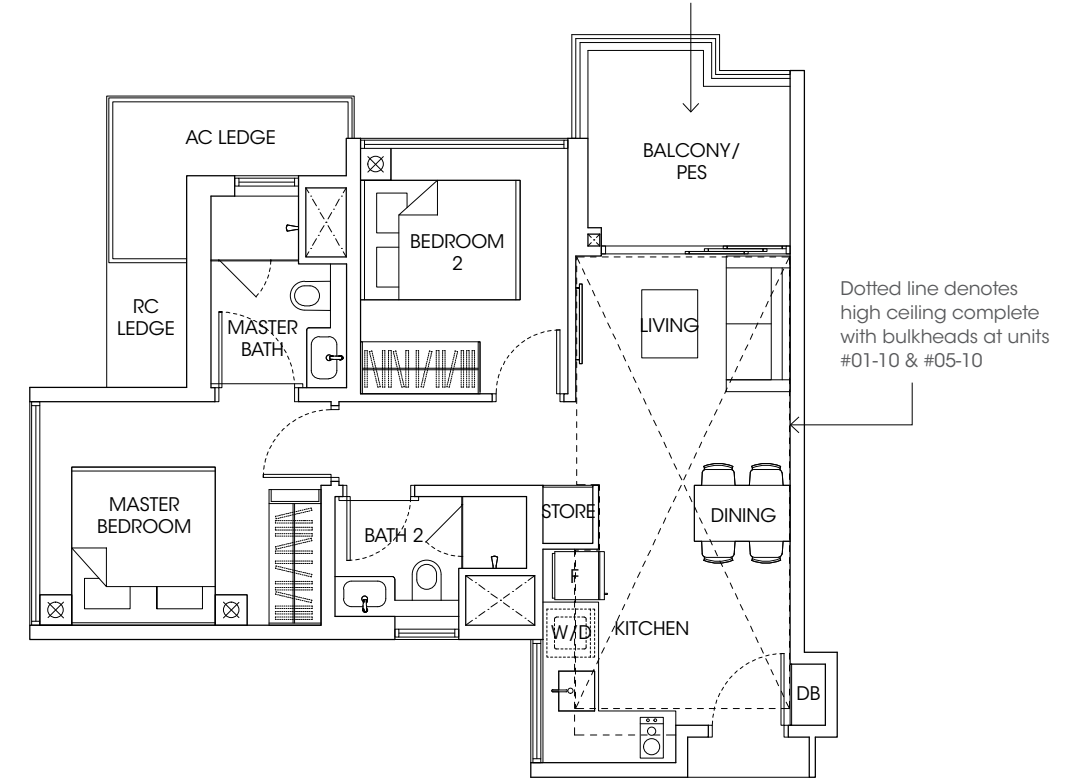
Blk 21, #05-10



Store layout applies to units #02-10 to #04-10



PES applies to units #01-10



LEGEND:



TYPE B1C

63.0 m² / 678 ft²
(inclusive of 7m² Balcony & 5m² AC Ledge)

Blk 21, #02-14 to #04-14

TYPE B1C-G

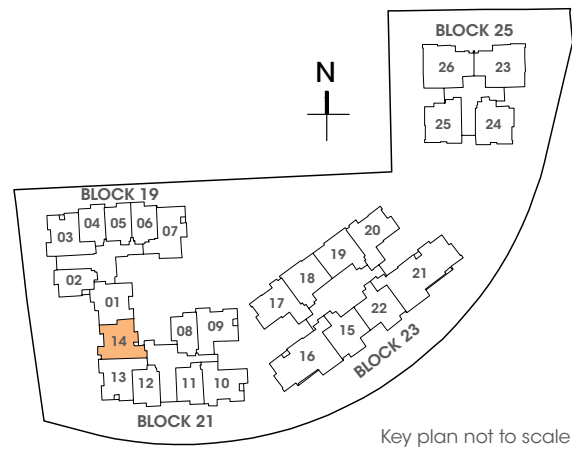
79.0 m² / 850 ft²
(inclusive of 7m² PES, 5m² AC Ledge & 16m² Void over Living, Dining & Kitchen)

Blk 21, #01-14

TYPE B1C-PH

79.0 m² / 850 ft²
(inclusive of 7m² Balcony, 5m² AC Ledge & 16m² Void over Living, Dining & Kitchen)

Blk 21, #05-14



TYPE B1D

62.0 m² / 667 ft²
(inclusive of 7m² Balcony & 4m² AC Ledge)

Blk 19, #02-01 to #04-01

TYPE B1D-G

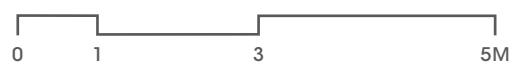
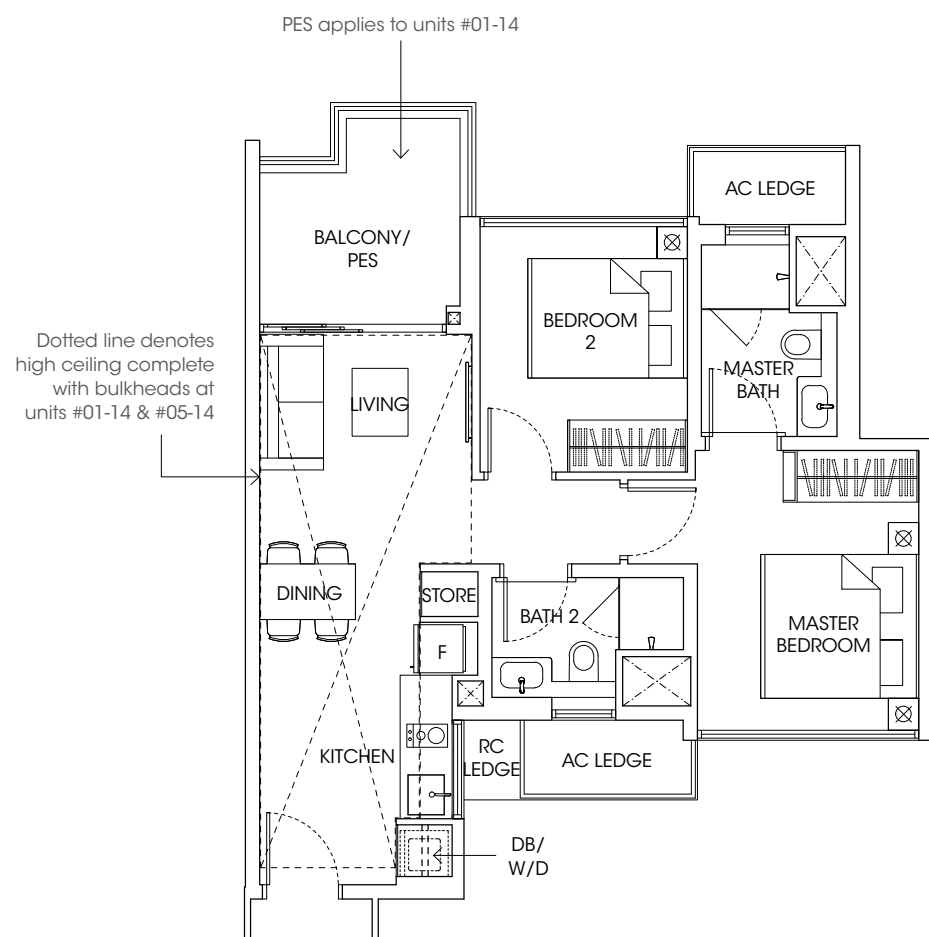
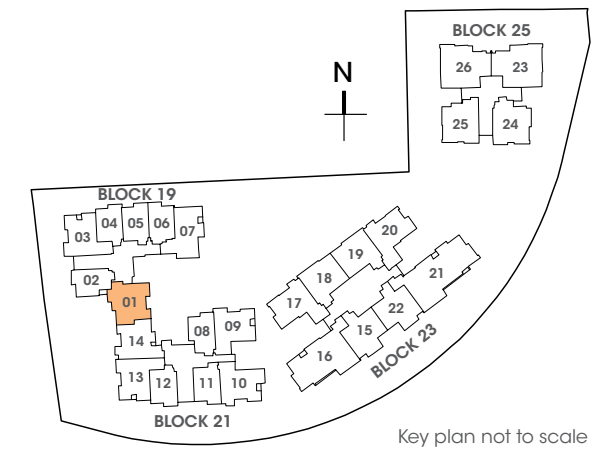
76.0 m² / 818 ft²
(inclusive of 7m² PES, 4m² AC Ledge & 14m² Void over Living & Dining)

Blk 19, #01-01

TYPE B1D-PH

76.0 m² / 818 ft²
(inclusive of 7m² Balcony, 4m² AC Ledge & 14m² Void over Living & Dining)

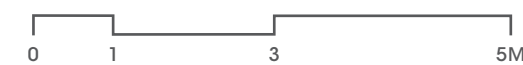
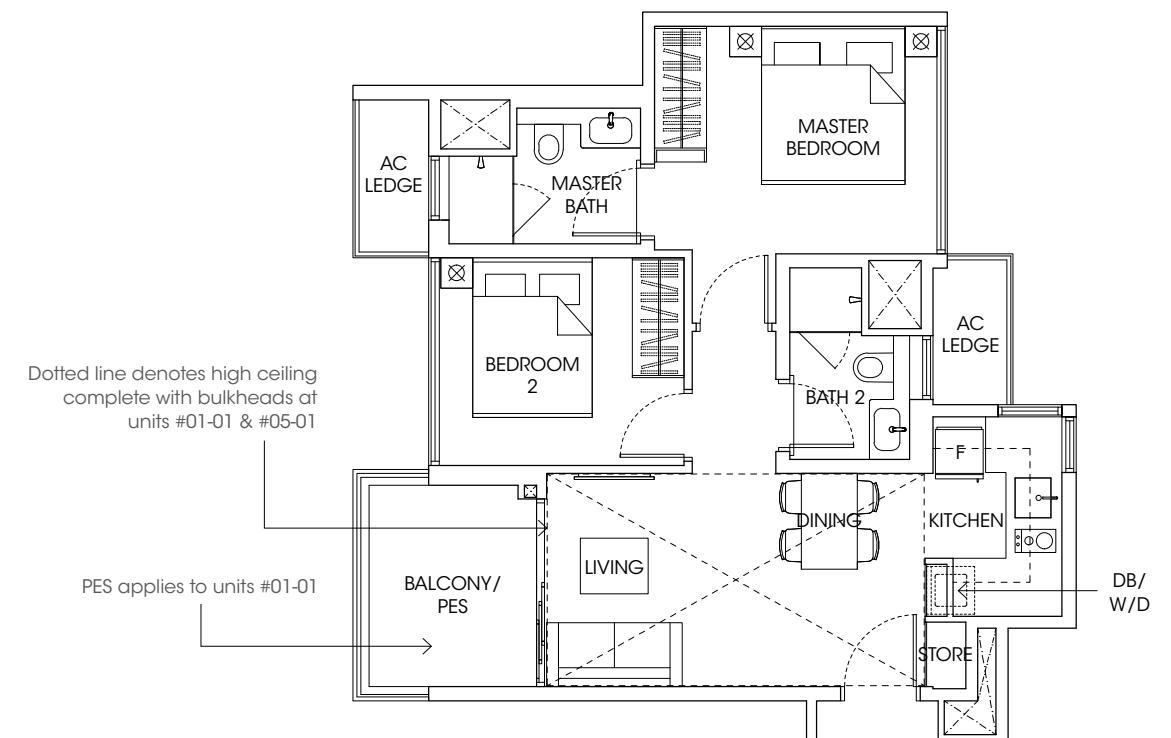
Blk 19, #05-01



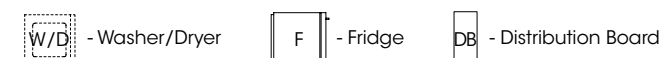
LEGEND:



All plans are subject to changes by the relevant authorities. Measurements are approximate only and subject to final survey. Information accurate at the point of printing. BP no.: A712-04181-2018-BP01



LEGEND:



All plans are subject to changes by the relevant authorities. Measurements are approximate only and subject to final survey. Information accurate at the point of printing. BP no.: A712-04181-2018-BP01

TYPE B1E

65.0 m² / 700 ft²
(inclusive of 8m² Balcony & 4m² AC Ledge)

Blk 19, #02-07 to #04-07

TYPE B1E-G

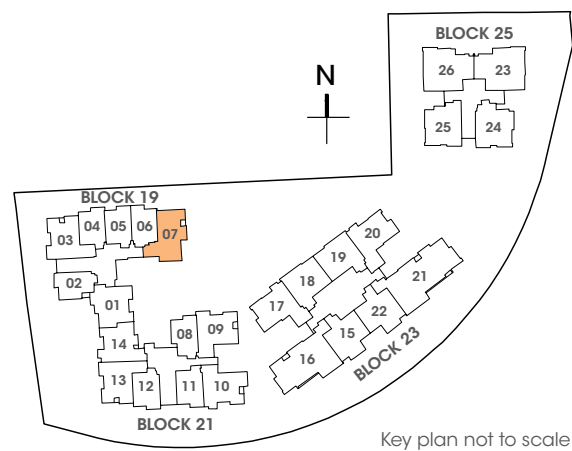
82.0 m² / 883 ft²
(inclusive of 8m² PES, 4m² AC Ledge & 17m² Void over Living, Dining & Kitchen)

Blk 19, #01-07

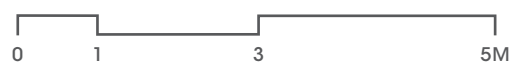
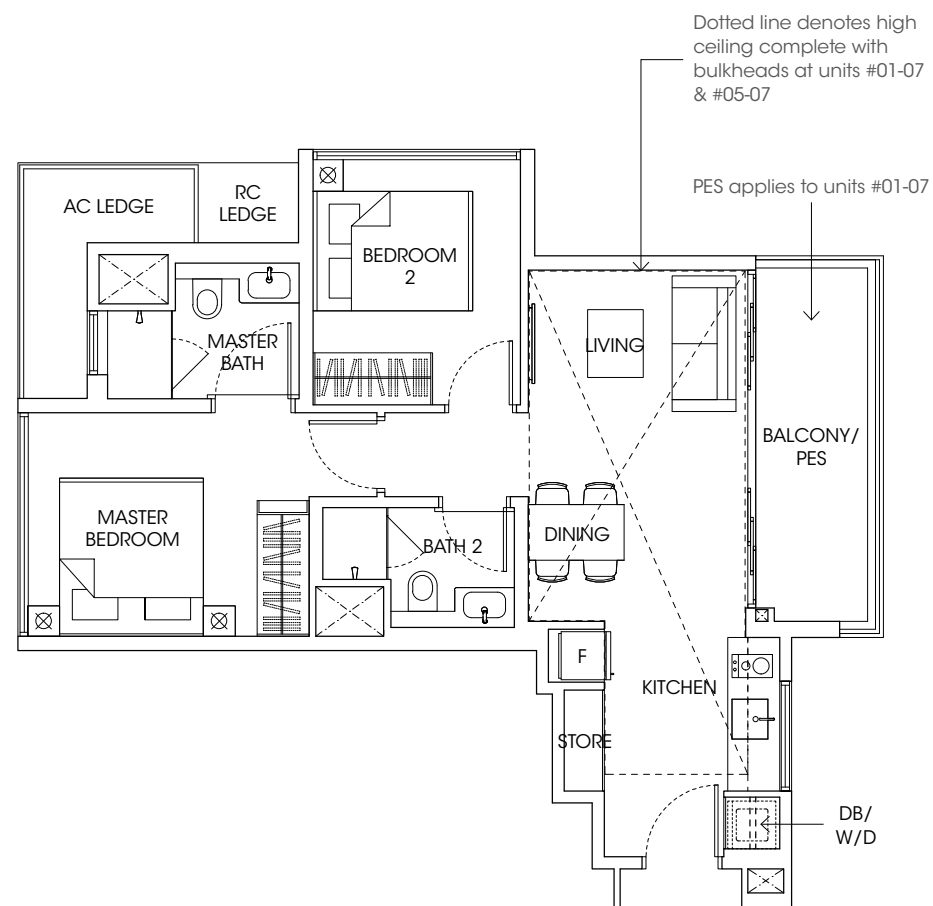
TYPE B1E-PH

82.0 m² / 883 ft²
(inclusive of 8m² Balcony, 4m² AC Ledge & 17m² Void over Living, Dining & Kitchen)

Blk 19, #05-07



Key plan not to scale



LEGEND:



All plans are subject to changes by the relevant authorities. Measurements are approximate only and subject to final survey. Information accurate at the point of printing. BP no.: A712-04181-2018-BP01

TYPE B1F

64.0 m² / 689 ft²
(inclusive of 7m² Balcony & 4m² AC Ledge)

Blk 21, #02-09 to #04-09

TYPE B1F-G

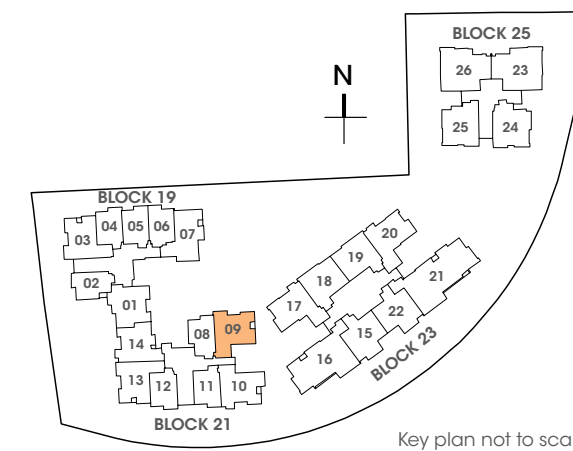
77.0 m² / 829 ft²
(inclusive of 7m² PES, 4m² AC Ledge & 13m² Void over Living & Dining)

Blk 21, #01-09

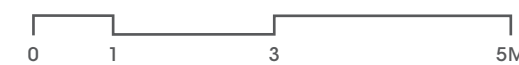
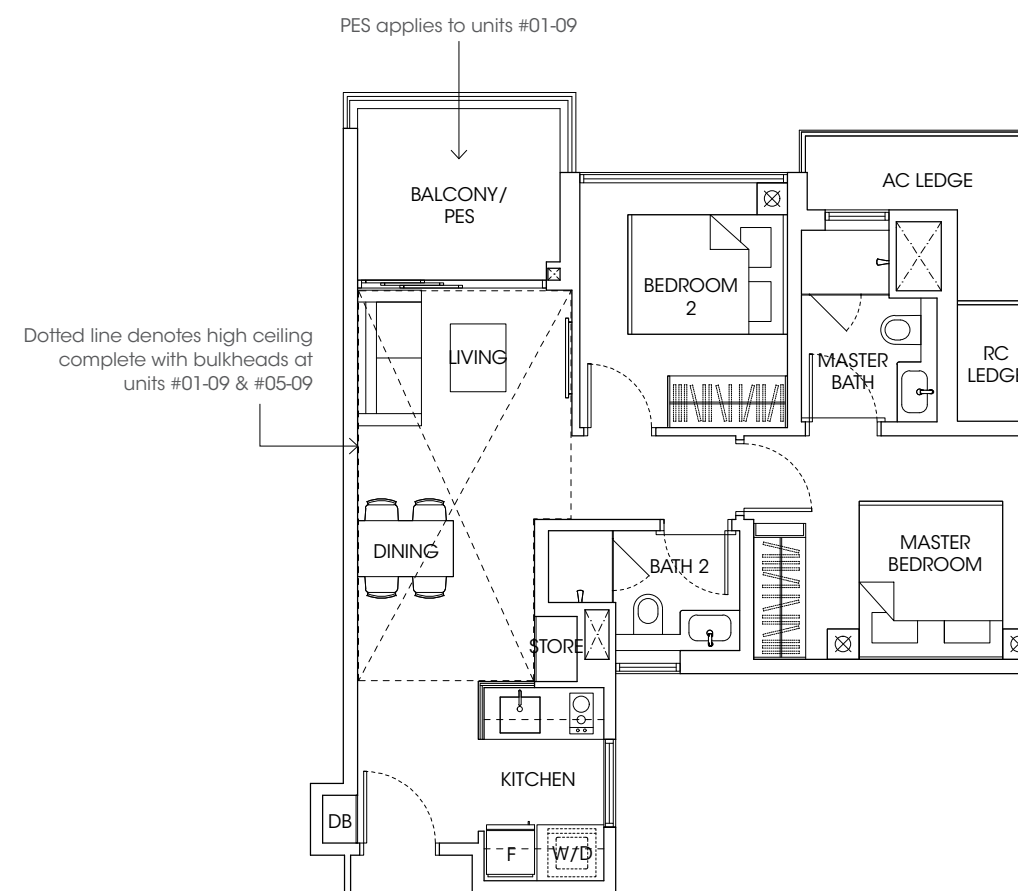
TYPE B1F-PH

77.0 m² / 829 ft²
(inclusive of 7m² Balcony, 4m² AC Ledge & 13m² Void over Living & Dining)

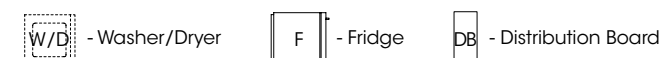
Blk 21, #05-09



Key plan not to scale



LEGEND:



All plans are subject to changes by the relevant authorities. Measurements are approximate only and subject to final survey. Information accurate at the point of printing. BP no.: A712-04181-2018-BP01

TYPE B2

68.0 m² / 732 ft²
(inclusive of 6m² Balcony & 5m² AC Ledge)

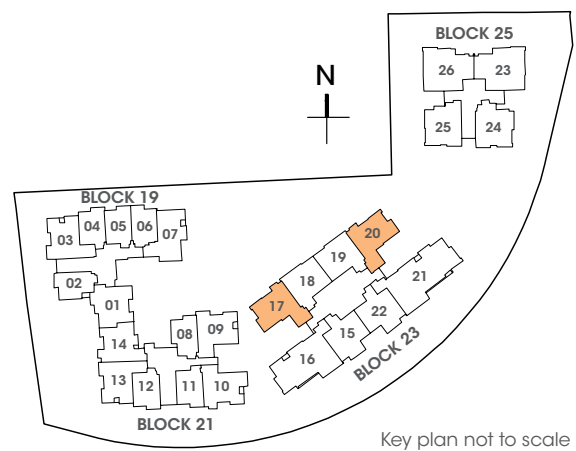
Blk 23, #02-17 to #16-17
#02-20* to #16-20*

TYPE B2-PH

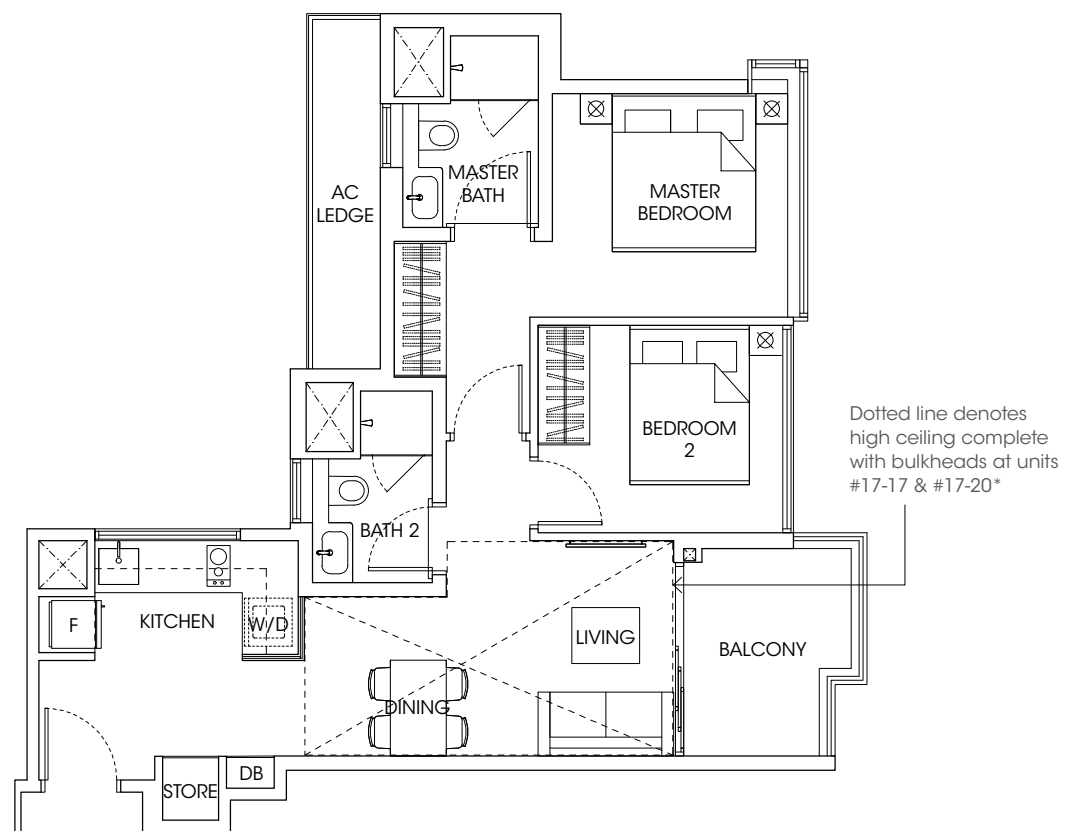
80.0 m² / 861 ft²
(inclusive of 6m² Balcony, 5m² AC Ledge & 12m² Void over Living & Dining)

Blk 23, #17-17
#17-20*

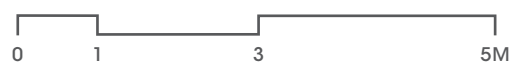
*Mirror Image



Key plan not to scale



Dotted line denotes high ceiling complete with bulkheads at units #17-17 & #17-20*



LEGEND:



All plans are subject to changes by the relevant authorities. Measurements are approximate only and subject to final survey. Information accurate at the point of printing. BP no.: A712-04181-2018-BP01

TYPE B3

61.0 m² / 657 ft²
(inclusive of 7m² Balcony & 4m² AC Ledge)

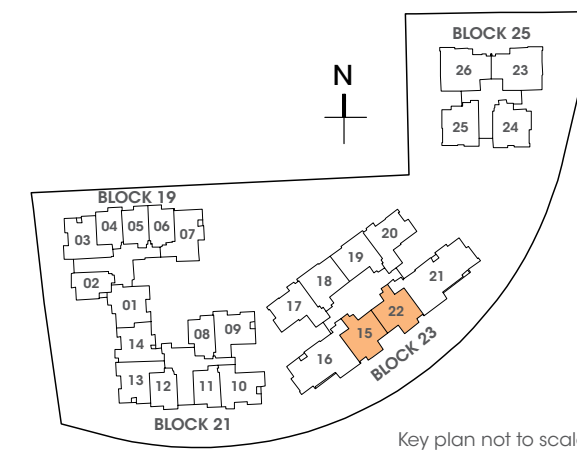
Blk 23, #02-15 to #16-15
#02-22* to #16-22*

TYPE B3-PH

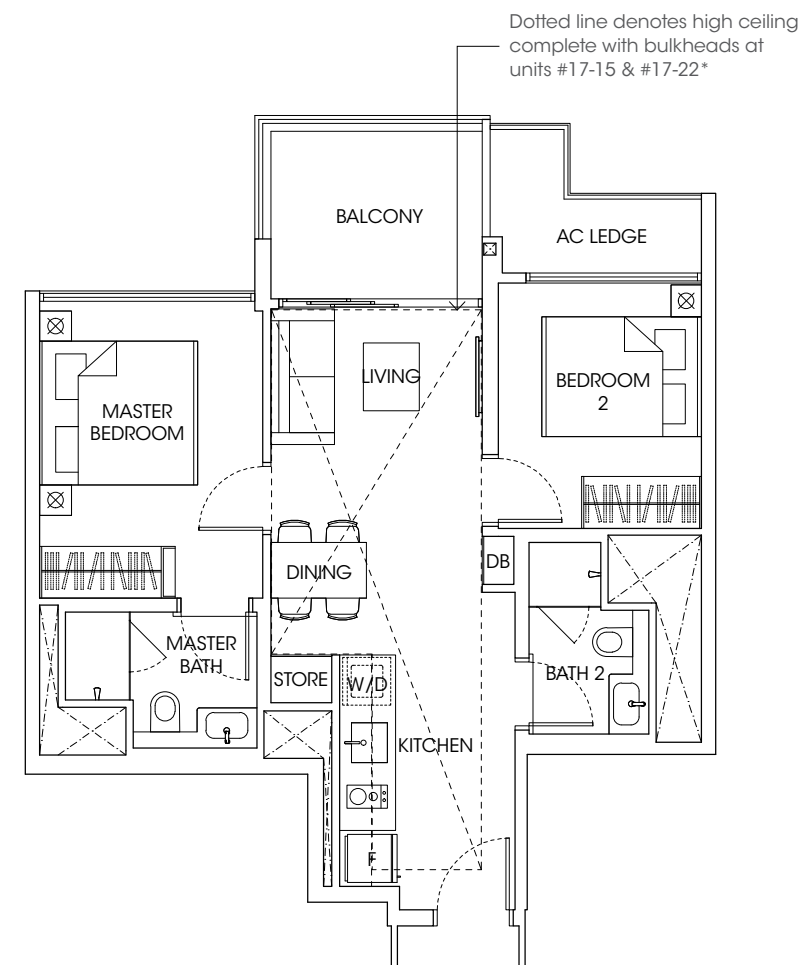
77.0 m² / 829 ft²
(inclusive of 7m² Balcony, 4m² AC Ledge & 16m² Void over Living, Dining & Kitchen)

Blk 23, #17-15
#17-22*

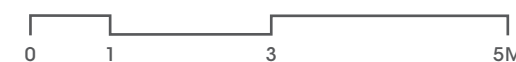
*Mirror Image



Key plan not to scale



Dotted line denotes high ceiling complete with bulkheads at units #17-15 & #17-22*



LEGEND:



All plans are subject to changes by the relevant authorities. Measurements are approximate only and subject to final survey. Information accurate at the point of printing. BP no.: A712-04181-2018-BP01

TYPE B4

62.0 m² / 667 ft²
(inclusive of 6m² Balcony & 4m² AC Ledge)

Blk 23, #02-18* to #16-18*
#02-19 to #16-19

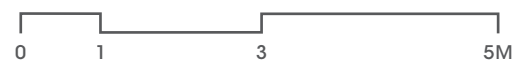
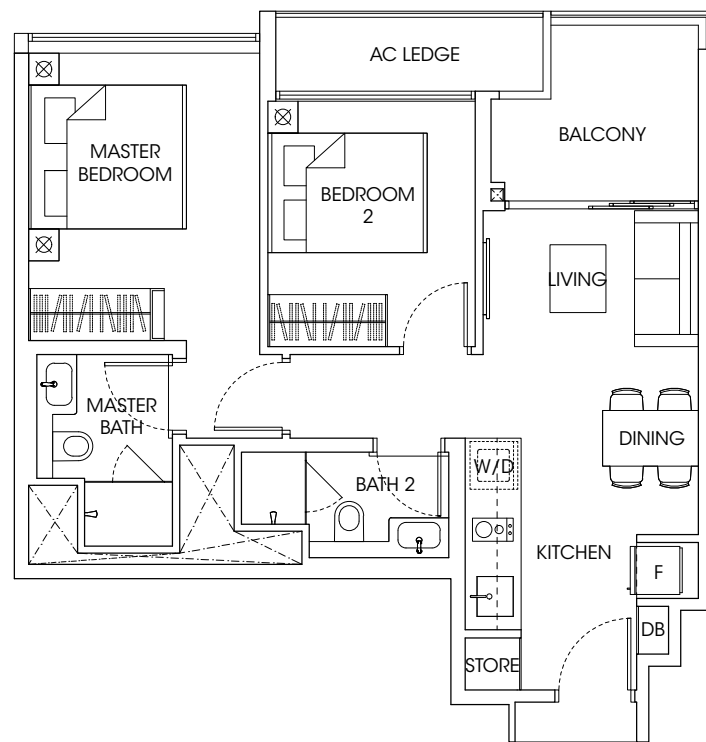
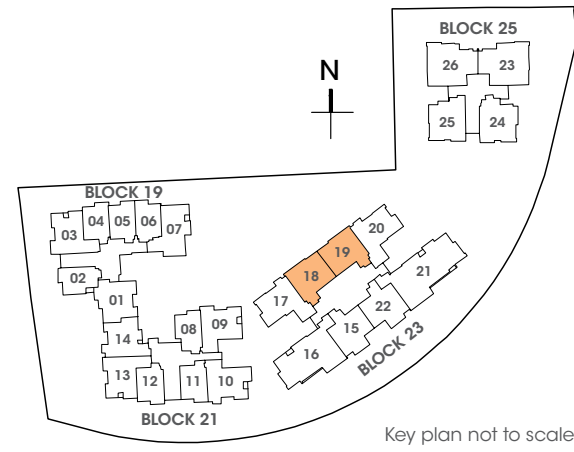
TYPE B4A

62.0 m² / 667 ft²
(inclusive of 6m² Balcony & 4m² AC Ledge)

Blk 23, #17-18*
#17-19

(Higher ceiling height for Living, Dining, Master Bedroom & Bedroom 2 at 3.285m high)

*Mirror Image



LEGEND:



TYPE B5

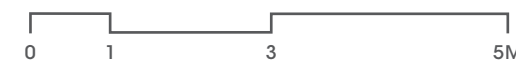
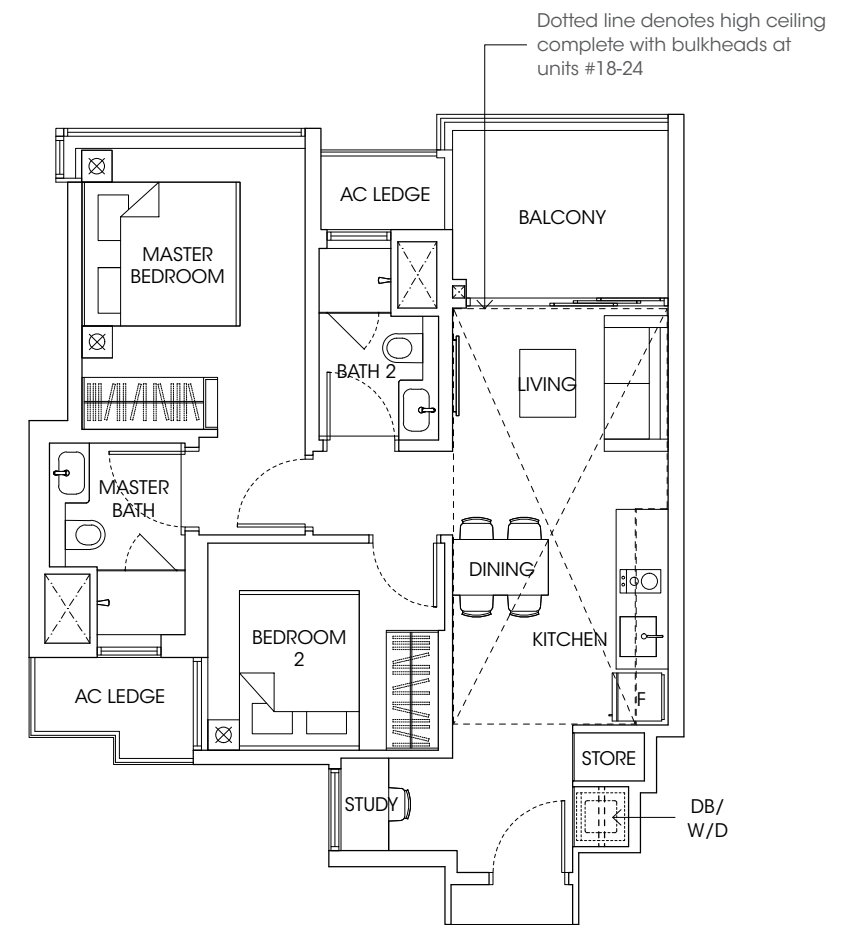
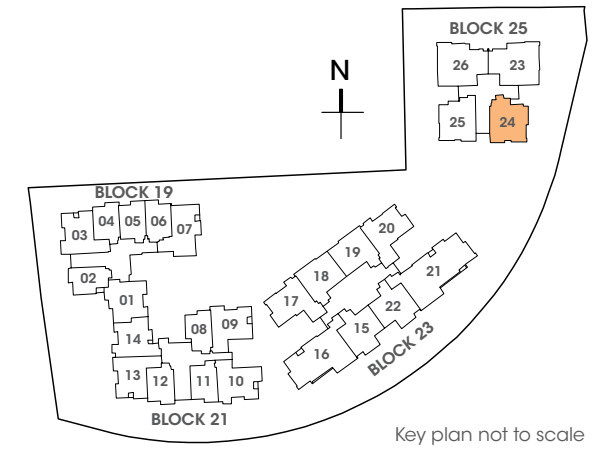
66.0 m² / 710 ft²
(inclusive of 7m² Balcony & 4m² AC Ledge)

Blk 25, #02-24 to #17-24

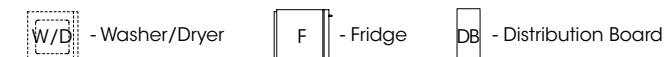
TYPE B5-PH

80.0 m² / 861 ft²
(inclusive of 7m² Balcony, 4m² AC Ledge & 14m² Void over Living, Dining & Kitchen)

Blk 25, #18-24



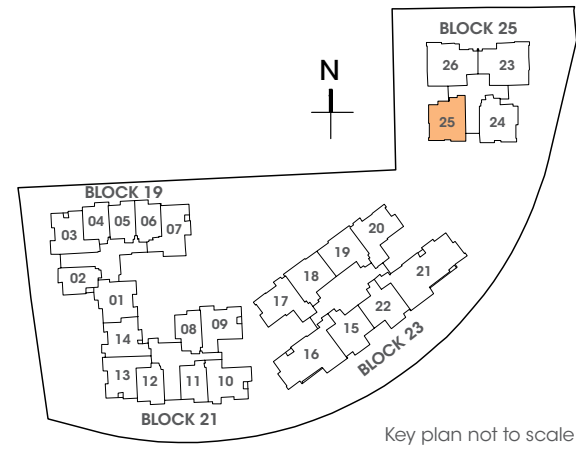
LEGEND:



TYPE B6

64.0 m² / 689 ft²
(inclusive of 7m² Balcony & 4m² AC Ledge)

Blk 25, #02-25 to #17-25



TYPE C1

82.0 m² / 883 ft²
(inclusive of 10m² Balcony & 4m² AC Ledge)

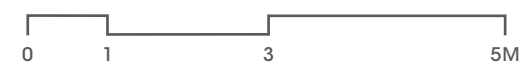
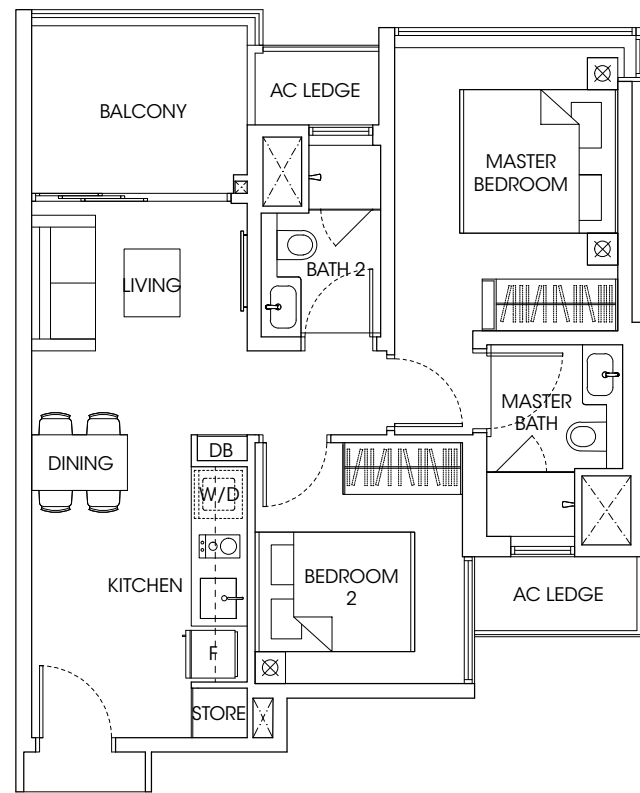
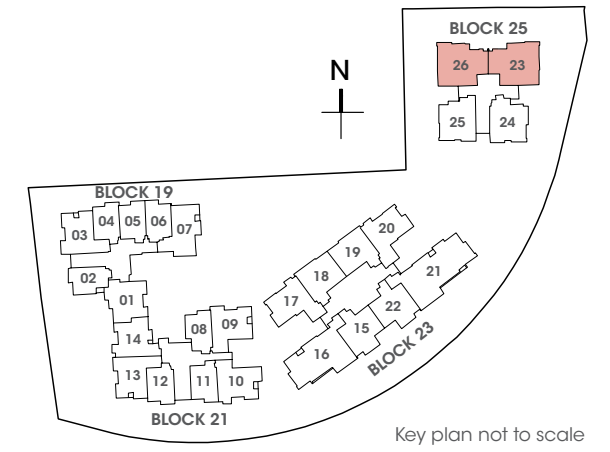
Blk 25, #02-23 to #17-23
#02-26* to #17-26*

TYPE C1-PH

95.0 m² / 1023 ft²
(inclusive of 10m² Balcony, 4m² AC Ledge & 13m² Void over Living & Dining)

Blk 25, #18-23
#18-26*

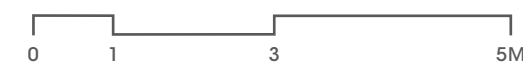
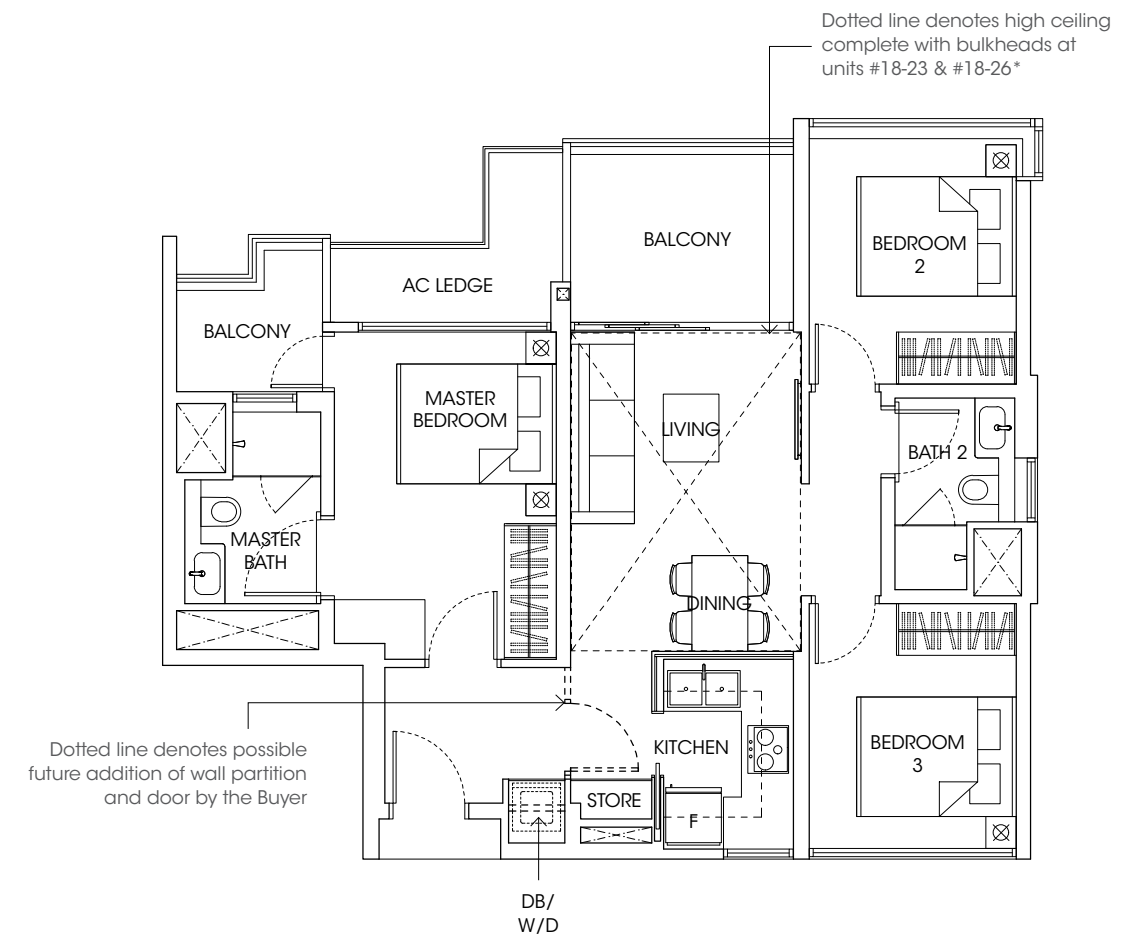
*Mirror Image



LEGEND:



All plans are subject to changes by the relevant authorities. Measurements are approximate only and subject to final survey. Information accurate at the point of printing. BP no.: A712-04181-2018-BP01



LEGEND:



All plans are subject to changes by the relevant authorities. Measurements are approximate only and subject to final survey. Information accurate at the point of printing. BP no.: A712-04181-2018-BP01

TYPE C2

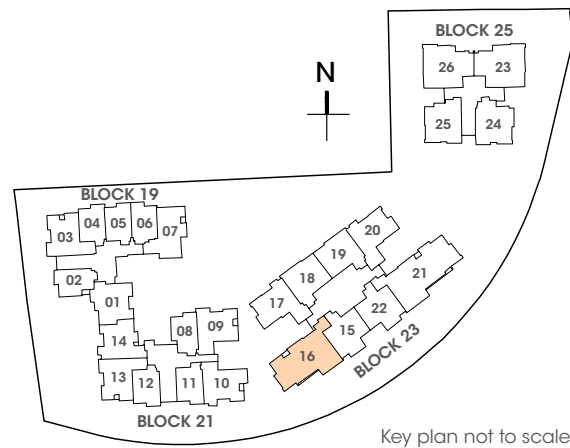
107.0 m² / 1152 ft²
(inclusive of 12m² Balcony & 7m² AC Ledge)

Blk 23, #02-16 to #16-16

TYPE C2-PH

127.0 m² / 1367 ft²
(inclusive of 12m² Balcony, 7m² AC Ledge & 20m² Void over Dining & Living)

Blk 23, #17-16



TYPE D1

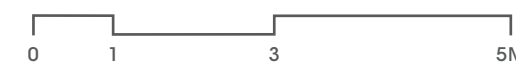
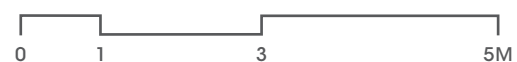
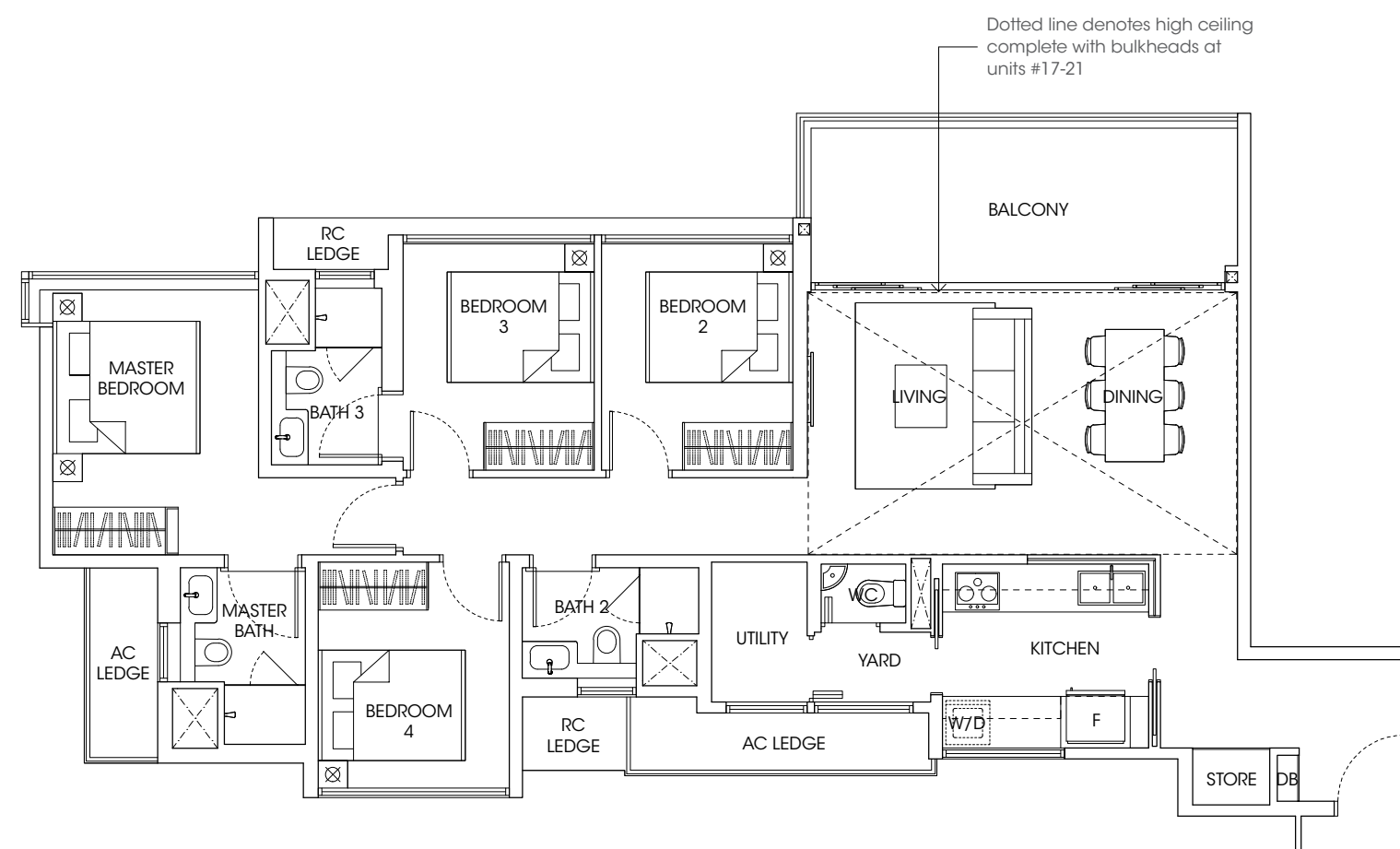
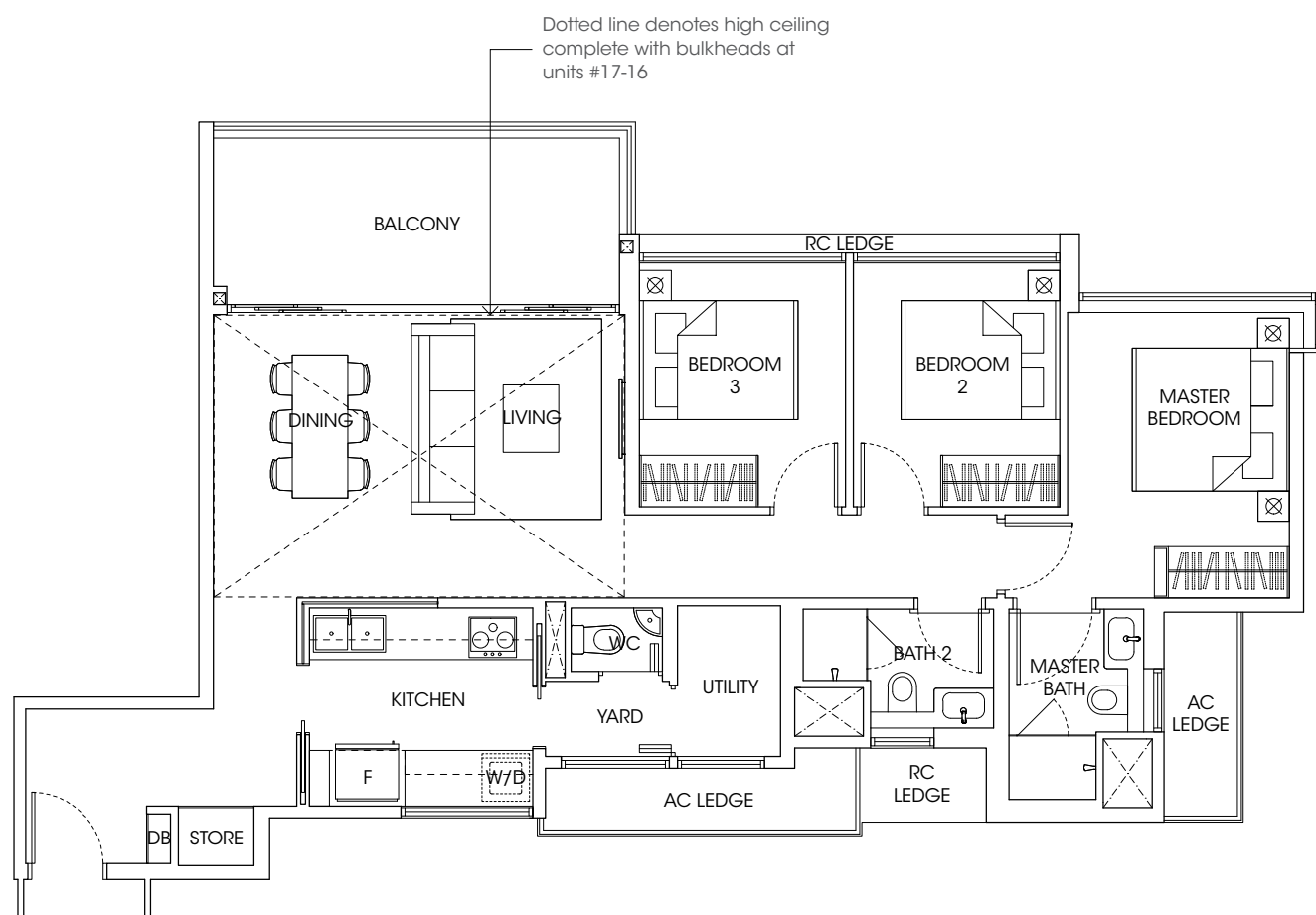
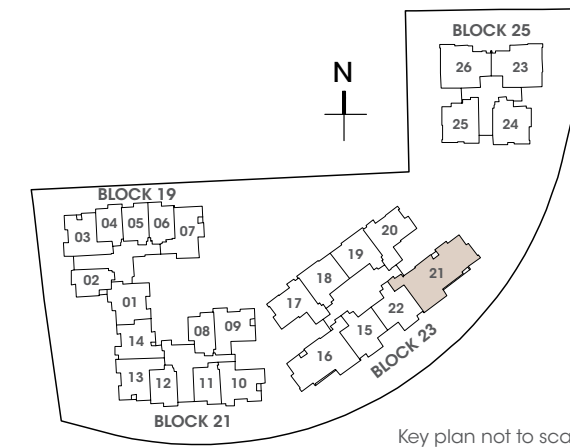
127.0 m² / 1367 ft²
(inclusive of 14m² Balcony & 7m² AC Ledge)

Blk 23, #02-21 to #16-21

TYPE D1-PH

149.0 m² / 1604 ft²
(inclusive of 14m² Balcony, 7m² AC Ledge & 22m² Void over Living & Dining)

Blk 23, #17-21



LEGEND:

- Washer/Dryer
- Fridge
- Distribution Board

All plans are subject to changes by the relevant authorities. Measurements are approximate only and subject to final survey. Information accurate at the point of printing. BP no.: A712-04181-2018-BP01

LEGEND:

- Washer/Dryer
- Fridge
- Distribution Board

All plans are subject to changes by the relevant authorities. Measurements are approximate only and subject to final survey. Information accurate at the point of printing. BP no.: A712-04181-2018-BP01